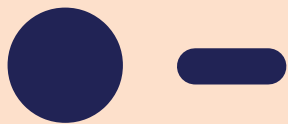


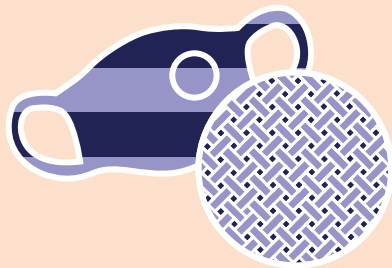
HIERARCHY OF *Protectiveness of Masks*



Protective



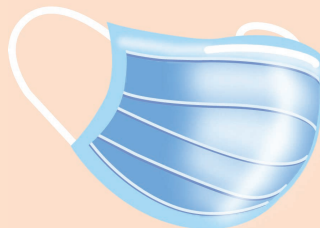
Well-constructed, well-fitted 3-layer cloth mask.



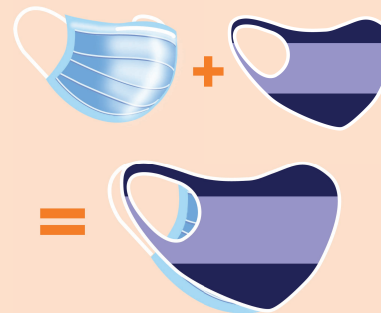
More Protective



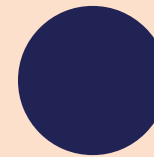
Disposable mask with ASTM Level 1, 2 or 3 rating.



Layered cloth mask with disposable mask.



Most Protective



A tight fitting international mask, such as a KN95, KF94, N95* respirator.



* Due to OSHA regulations, employers may not issue N95 respirators without proper fit-testing, training and medical evaluation. University departments may not supply N95 respirators for COVID-19 except in very limited circumstances, determined by EHS.